

<b>Stimmprotokoll</b>	<b>05.05.2012</b>
<b>Mayer Hans, 14.09.1966</b>	<b>LW1002</b>

### S/Z

Dauer  s	22.92	sek.	
Dauer  z	24.30	sek.	
s/z Verhältnis	0.94		

### MPT

MPT	29.99	sek.	
-----	-------	------	--

### Vospector

Irregularität	1.01	%	
Rauschen	0.68	%	

### Frequenzverlauf

F0 max	735.00	Hz	(fis")
F0 min	75.67	Hz	(DIS)
Umfang	659.33	Hz	(39 HT)

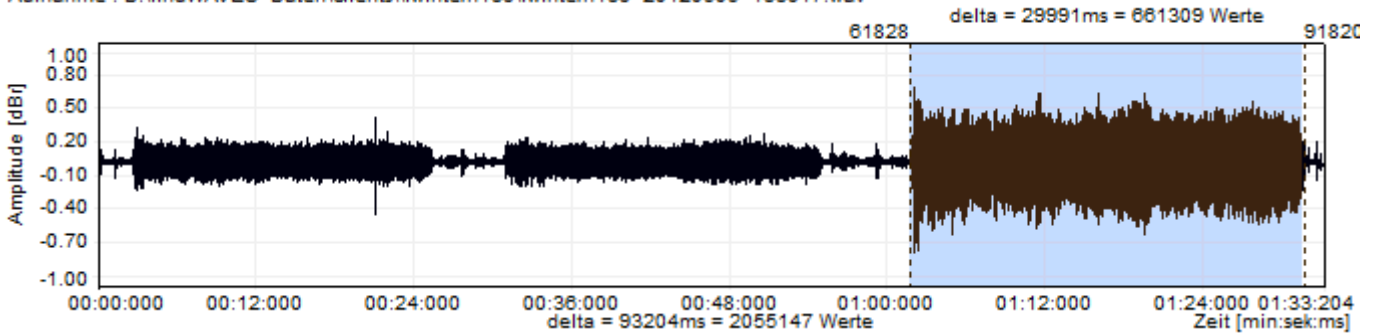
### DSI

DSI	6.96		
-----	------	--	--

### Sprechstimmprofil

mittlere Tonhöhe	132.33	Hz	(c)
Abweichung Tonhöhe	22.04	Hz	
mittlere Lautstärke	67.80	dB(A)	
Abweichung Lautstärke	3.70	dB(A)	

Aufnahme : D:\linoWAVES Daten\clients\lwintern138\lwintern138 20120505 133917.wav



Labels

[s]

[z]

[MPT]

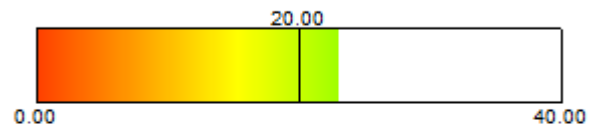
s/z

Maximal gehaltene Phoneme [s] und [z]

Dauer [s]: 22.92 s

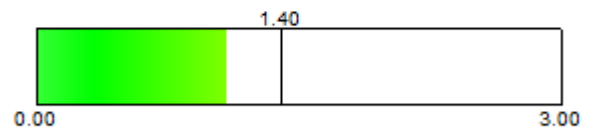
Dauer [s] 22.92 s

Dauer [z] 24.30 s



s/z Verhältnis: 0.94

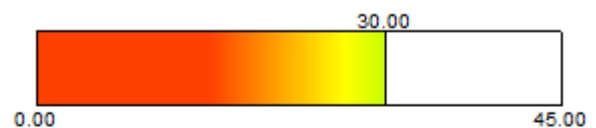
s/z Verhältnis 0.94



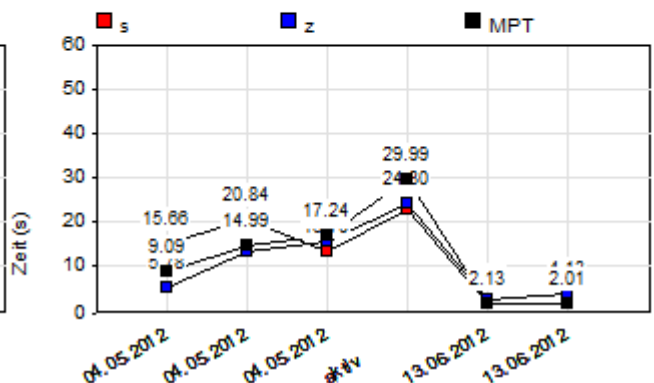
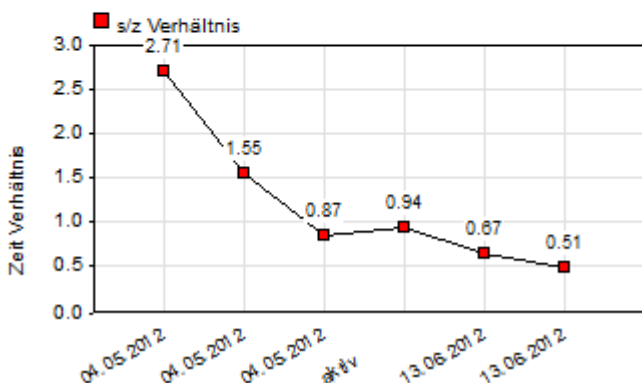
Maximal gehaltener Vokal [a]

MPT: 29.99 s

MPT 29.99 s



Trend



# Stimmprotokoll

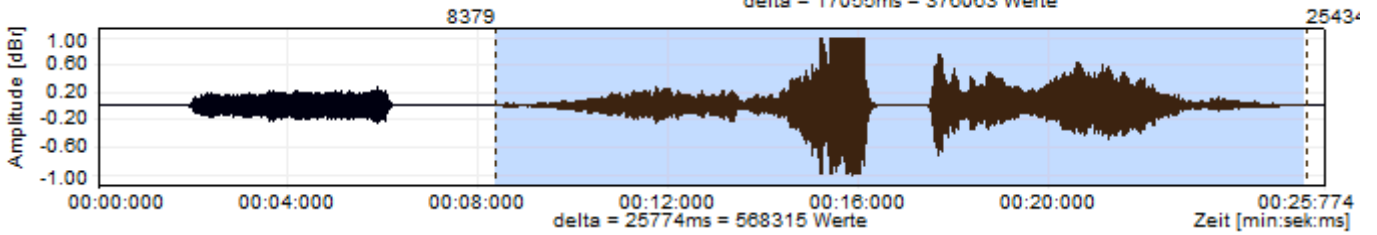
05.05.2012

Mayer Hans, 14.09.1966

LW1002

Aufnahme : D:\linoWAVES Daten\clients\lwintern138\lwintern138 20120505 133917.wav

delta = 17055ms = 376063 Werte



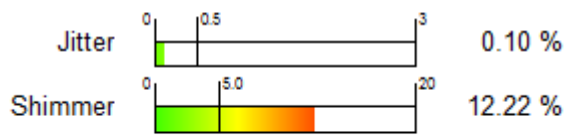
Labels

[a]

[Glide]

Vospector

Gehaltener Vokal [a]



Irregularität: 1.01



Rauschen: 0.68

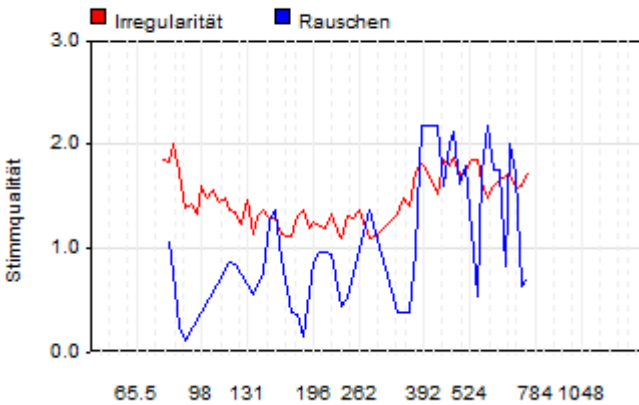


mittl. F0 116.01 Hz

Mittlere Lautstärke: 76.96 dB(A)

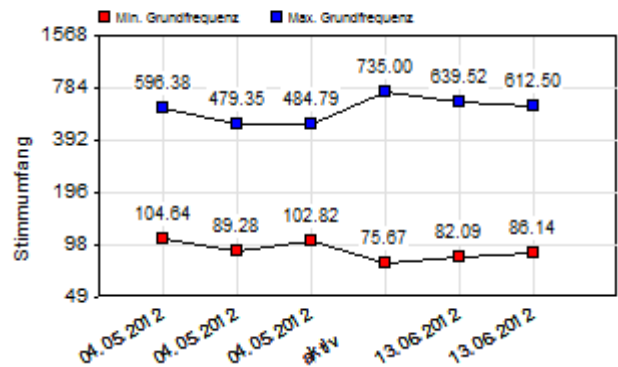
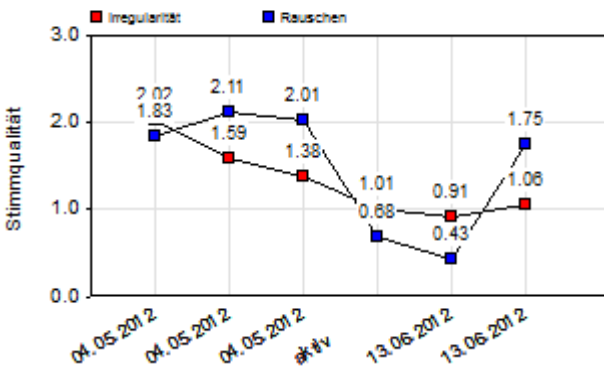
Gleitende Tonhöhe

mit gleitender Tonhöhe gesungener Vokal [a]



Min F0 75.67 Hz DIS  
 Max F0 735.00 Hz fis"  
 Umfang 659.33 Hz 39 HT

Trend



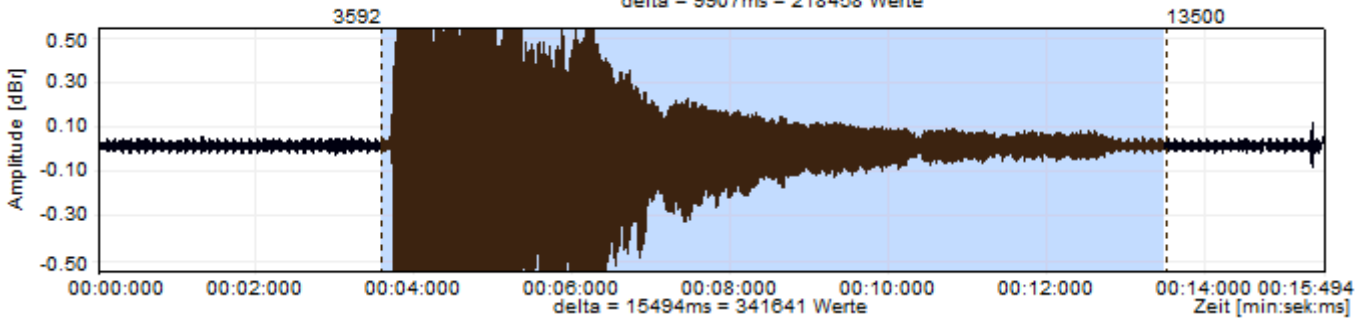
# Stimmprotokoll

05.05.2012

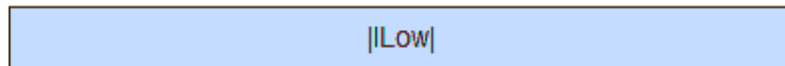
Mayer Hans, 14.09.1966

LW1002

Aufnahme : D:\lingWAVES Daten\clients\lwintern138\lwintern138\_20120505\_133917.wav  
 delta = 9907ms = 218458 Werte



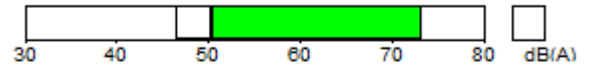
Labels



DSI

niedrigste Lautstärke

50.45 dB(A)



höchste Frequenz

735.00 Hz

(vom Tab "F0 (Tonhöhe) - Gleitende Tonhöhe")

MPT

29.99 s

(vom Tab "S/Z - MPT")

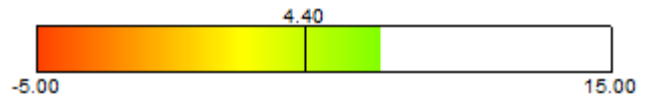
Jitter

0.10 %

(vom Tab "F0 (Tonhöhe) - Vospector")

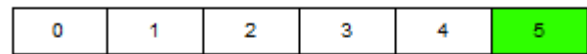
DSI

7.0

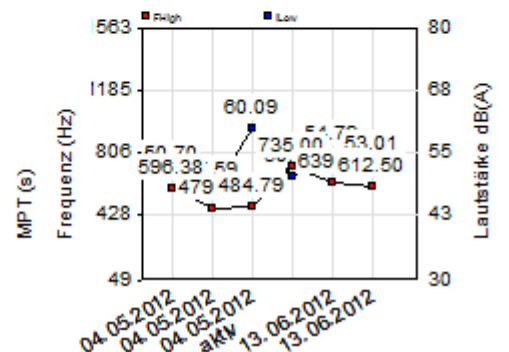
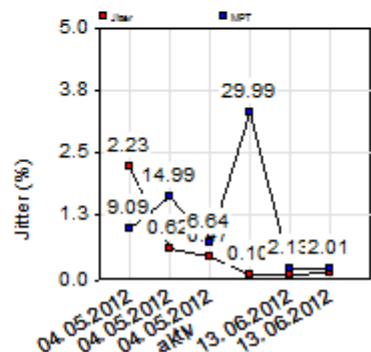
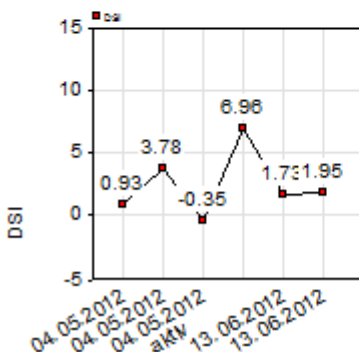


DSI Klasse

5



## Trend



# Stimmprotokoll

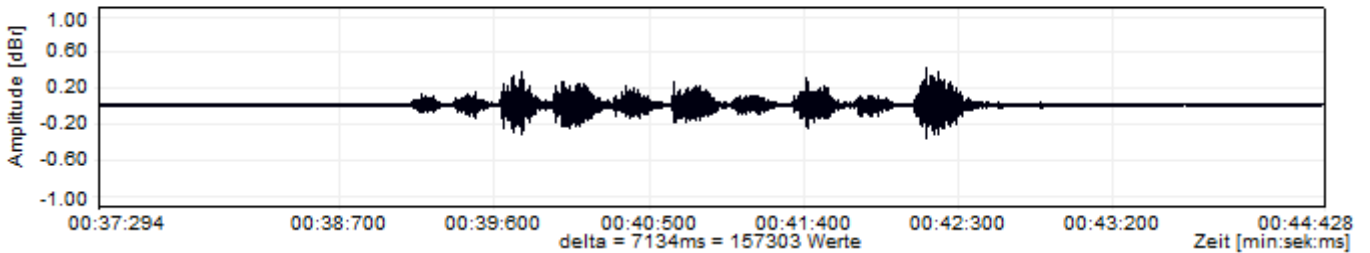
05.05.2012

Mayer Hans, 14.09.1966

LW1002

Aufnahme : D:\lingWAVES Daten\clients\lwintern138\lwintern138\_20120505\_133917.wav

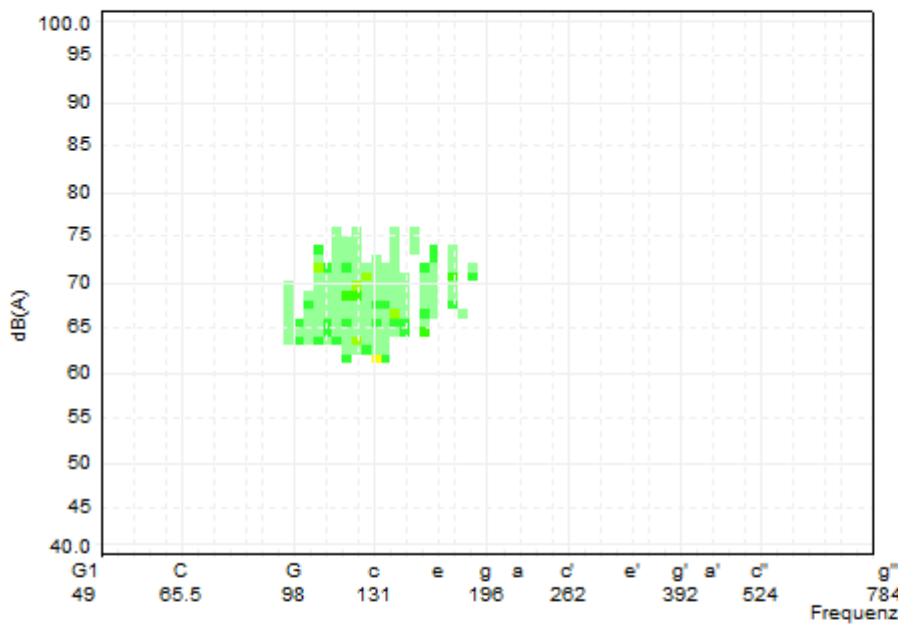
00:00:00 00:06:00 00:12:00 00:18:00 00:24:00 00:30:00 00:36:00 00:44:28



Aligner

Sprechprofil

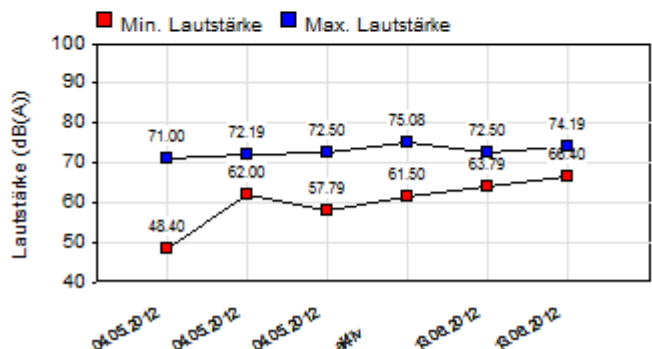
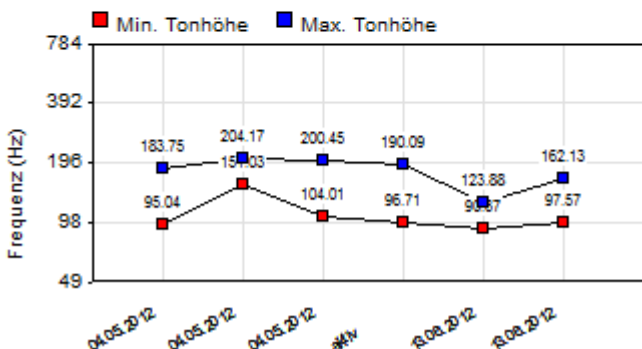
## Entspannt gesprochener Text



Tonhöhe		
Mittelwert	132.33 Hz	c
Abweichung	22.04 Hz	
Min	96.71 Hz	G
Max	190.09 Hz	fis
Umfang	93.38 Hz	12 HT

Lautstärke		
Mittelwert	67.80 dB(A)	
Abweichung	3.70 dB(A)	
Min	61.50 dB(A)	
Max	75.08 dB(A)	
Dynamik	13.58 dB(A)	

## Trend



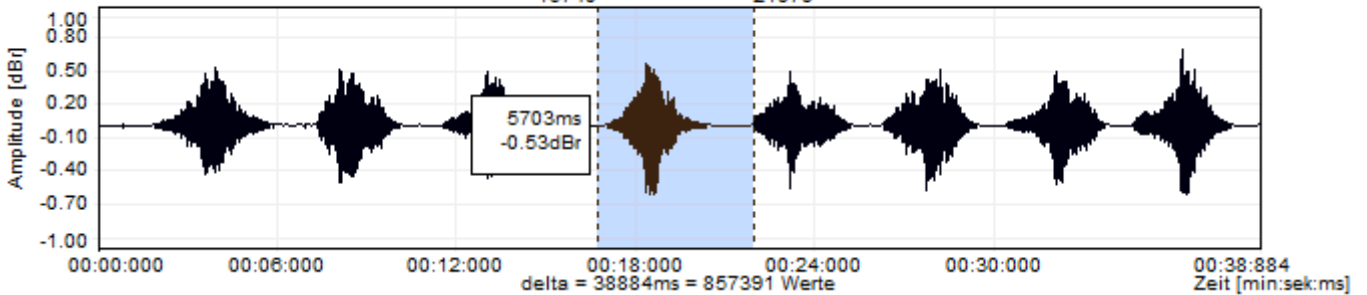
# Stimmprotokoll

05.05.2012

Mayer Hans, 14.09.1966

LW1002

Aufnahme : D:\lingWAVES Daten\clients\lwintern138\lwintern138\_20120505\_133917.wav  
delta = 5239ms = 115529 Werte  
16740 21979



Lautstärke-F0 (1024 / Rechteck) / AMDF / 40. / 400. )

